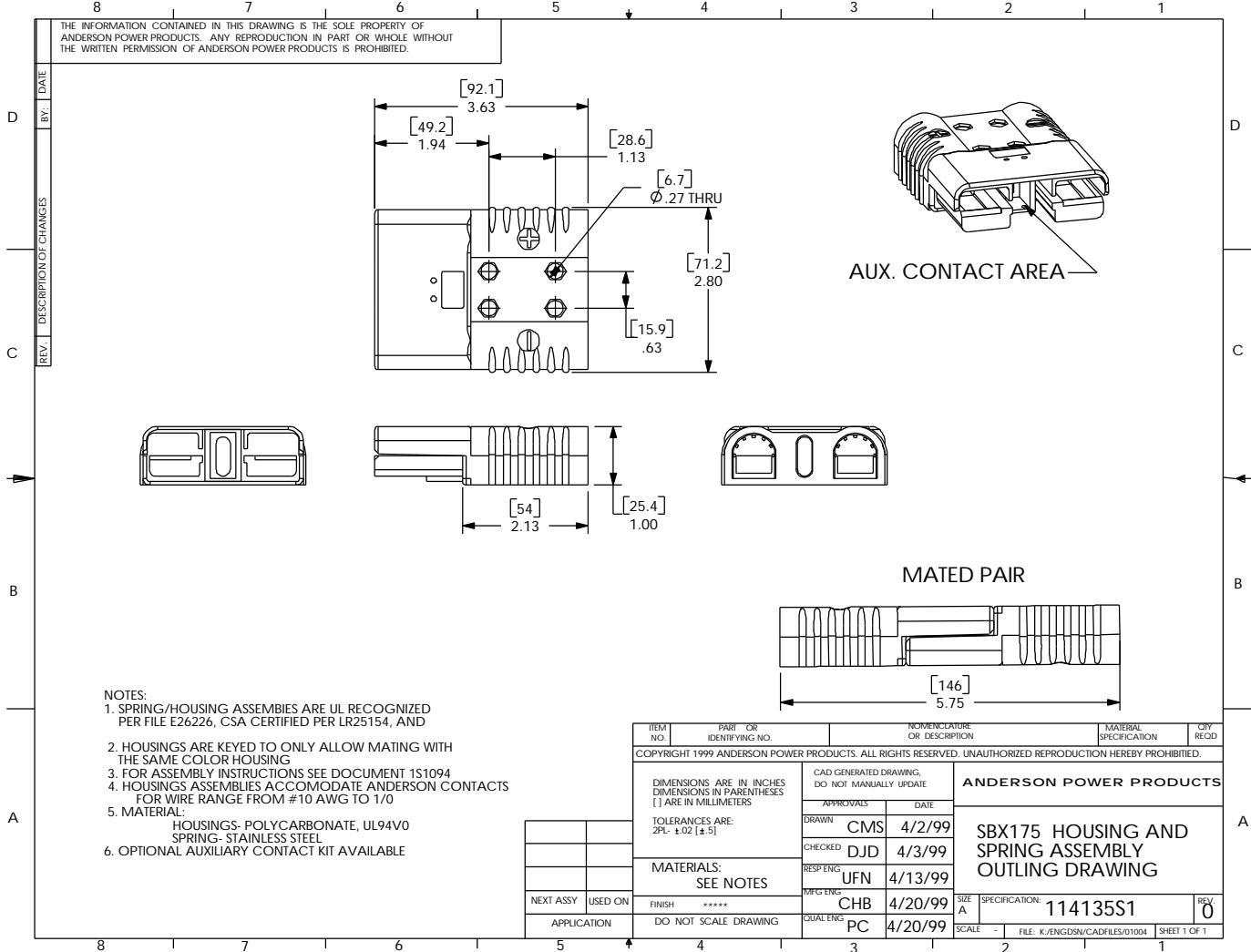


THE INFORMATION CONTAINED IN THIS DRAWING IS THE SOLE PROPERTY OF ANDERSON POWER PRODUCTS. ANY REPRODUCTION IN PART OR WHOLE WITHOUT THE WRITTEN PERMISSION OF ANDERSON POWER PRODUCTS IS PROHIBITED.



- NOTES:
1. SPRING/HOUSING ASSEMBLIES ARE UL RECOGNIZED PER FILE E26226, CSA CERTIFIED PER LR25154, AND
 2. HOUSINGS ARE KEYED TO ONLY ALLOW MATING WITH THE SAME COLOR HOUSING
 3. FOR ASSEMBLY INSTRUCTIONS SEE DOCUMENT 1S1094
 4. HOUSINGS ASSEMBLIES ACCOMODATE ANDERSON CONTACTS FOR WIRE RANGE FROM #10 AWG TO 1/0
 5. MATERIAL:
HOUSINGS- POLYCARBONATE, UL94V0
SPRING- STAINLESS STEEL
 6. OPTIONAL AUXILIARY CONTACT KIT AVAILABLE

NEXT ASSY	USED ON
APPLICATION	FINISH *****
	DO NOT SCALE DRAWING

ITEM NO.	PART OR IDENTIFYING NO.	NOMENCLATURE OR DESCRIPTION	MATERIAL SPECIFICATION	QTY	REC'D
COPYRIGHT 1999 ANDERSON POWER PRODUCTS. ALL RIGHTS RESERVED. UNAUTHORIZED REPRODUCTION HEREBY PROHIBITED.					
DIMENSIONS ARE IN INCHES DIMENSIONS IN PARENTHESES [] ARE IN MILLIMETERS		CAD GENERATED DRAWING. DO NOT MANUALLY UPDATE		ANDERSON POWER PRODUCTS	
TOLERANCES ARE: 2PL- ±.02 [±.5]		APPROVALS	DATE		
MATERIALS: SEE NOTES		DRAWN	CMS	4/2/99	SBX175 HOUSING AND SPRING ASSEMBLY OUTLING DRAWING
		CHECKED	DJD	4/3/99	
		RESP ENGS	UFN	4/13/99	
		MFG ENG	CHB	4/20/99	
		CUAL ENG	PC	4/20/99	
		SIZE	A	SPECIFICATION:	114135S1
		SCALE	-	FILE:	K:/ENGDGN/CADFILES/01004
				SHEET	1 OF 1